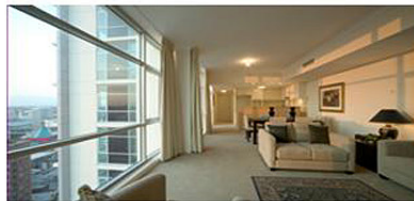




- ▾ Projects
- ▾ Commercial
- ▾ Infra-architecture
- ▾ Interior design
- ▾ Century Tower
- ▾ Emporio
- ▾ Sunlord Tower
Cassia Gardens
- ▾ Telstra Corporate
Offices
- ▾ Media
- ▾ Residential
- ▾ Urban Design



*Luxury
Apartments in
Sydney's CBD*

Sunlord Tower Cassia Gardens George Street Haymarket

Striking entry foyers lead to both the residential and commercial components of this ultra modern development. The residential finishes include luxury marble bathrooms and the kitchens with granite benchtops and state-of-the-art appliances. The planning of the living areas optimises the access for natural light and ventilation.